



33 School Wood Farm, Addingham, LS29 9JU

Asking Price £34,950

- TWO BED PARK HOME WITH RESIDENTIAL LICENCE
- ATTRACTIVE RURAL SETTING
- OPEN PLAN LIVING/DINING/KITCHEN AREA
- FAMILY RUN PARK
- EARLY VIEWING A MUST
- ONSITE PARKING
- RAISED DECKING AREA
- FABULOUS VIEWS
- CLOSE TO ADDINGHAM/ILKLEY/SKIPTON

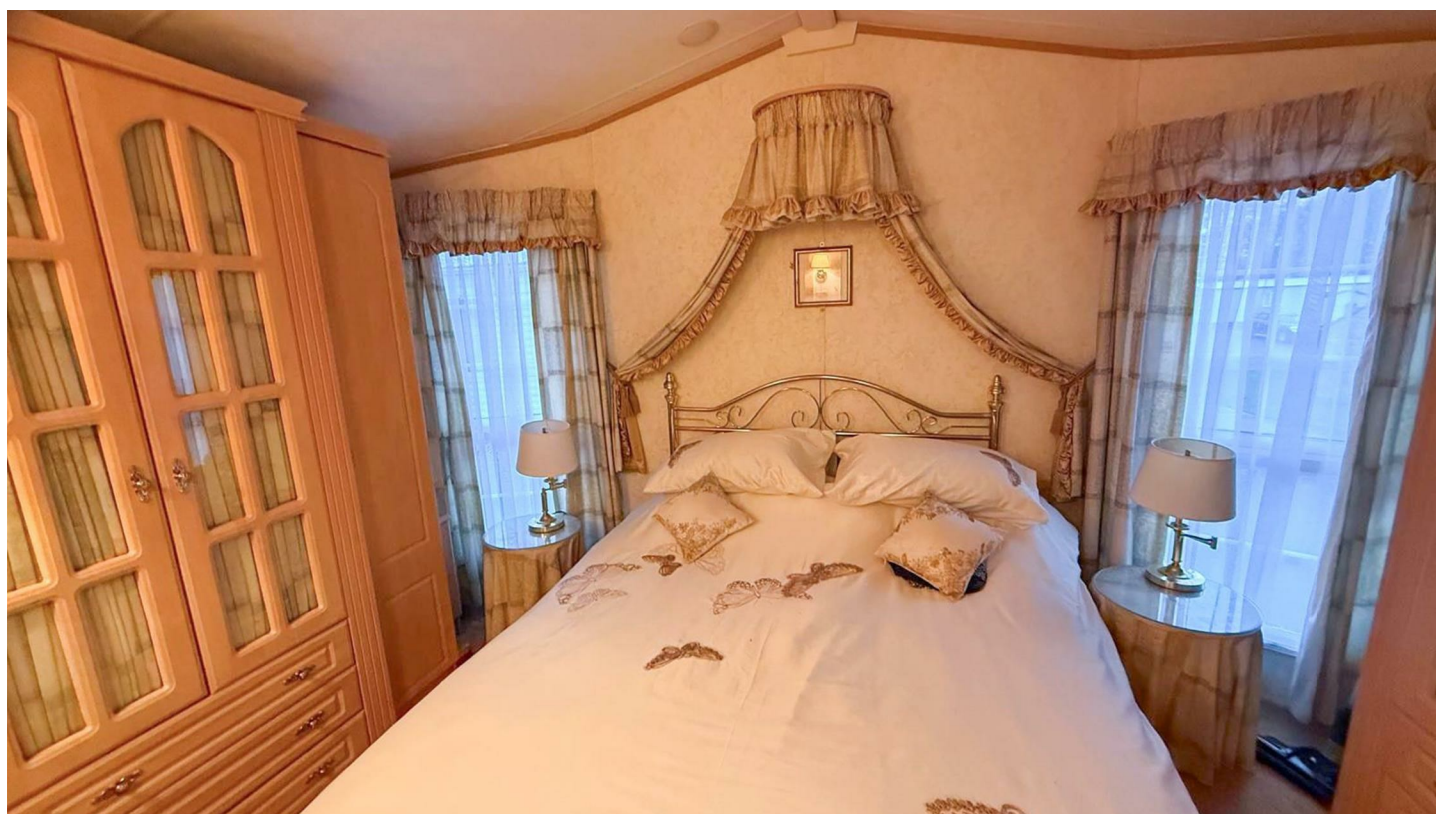


## 33 School Wood Farm, Addingham LS29 9JU

Tucked away in a peaceful and picturesque setting, this residential two-bedroom park home offers open plan living, raised decking area with fabulous views and onsite parking. One of only a small number of homes on the site benefitting from full residential status.



Council Tax Band: A



## PROPERTY DETAILS

Tucked away in a peaceful and picturesque setting, this two-bedroom park home offers a rare opportunity to enjoy rural tranquillity without sacrificing everyday convenience. One of only a small number of homes on the site benefitting from full residential status, the property has been lovingly occupied by the current owner for the past 21 years and is now ready for its next chapter.

The accommodation is thoughtfully arranged and includes a bright open plan living, dining and kitchen area, perfectly positioned to make the most of the fabulous woodland backdrop and far-reaching countryside views. An inner hallway leads to the master bedroom, complete with a useful cloakroom, along with a second bedroom and a well-appointed shower room.

Outside, a raised decking area provides the ideal spot to relax, entertain, and fully appreciate the surrounding scenery, while on-site parking adds to the property's practicality. Set amidst sweeping countryside and enjoying stunning views, yet just a short drive from the vibrant centres of Addingham, Ilkley and Skipton, this delightful home truly offers the best of both worlds.

## ADDITIONAL INFORMATION

Ground rent approx. £3,000 p/a to include water

The property is subject to a rolling annual park review

Electricity is charged by the park 3 times a year

Propane gas

The park owners are available to meet with interested parties to clarify any information



## Viewings

Viewings by arrangement only. Call 01756 753341 to make an appointment.